





Integrated Pedestrian Safety System(IPSS)

The Integrated Pedestrian Safety System (IPSS) is an integrated smart device designed for the safe pedestrian crossing. It is a smart pedestrian system that actively responds to various situations at the intersection, and guides pedestrians through auditory guidance. This solution perceives pedestrians waiting at crosswalks and automatically announce a departure when light changes, and additionally turns on the auditory guidance for the visually impaired. This system is optimized for smart transportation infrastructures.



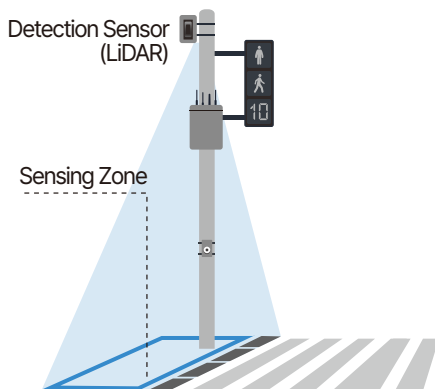
Key Features

-  Automatic pedestrian sensing and manual button activation
-  Synchronized control between intersections
-  Crosswalk departure sensing and warning
-  Auditory guidance and signals for the visually impaired

Automatic Pedestrian Sensing and Manual Button Activation

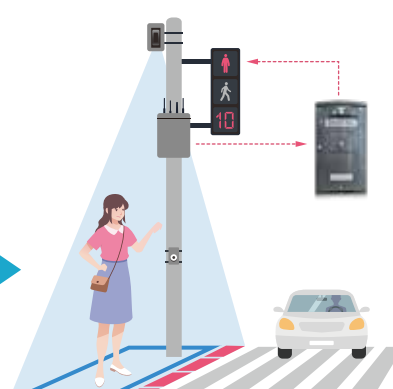
Automatic Pedestrian Sensing

When the sensor detects a pedestrian, the pedestrian light automatically switches to green without any additional action, strengthening a safe crossing of pedestrians.



Continuous scanning of pedestrian zones

A sensor continuously scans the pedestrian waiting zone.



Automatic pedestrian sensing

The sensor automatically switches the pedestrian light after perceiving a person.

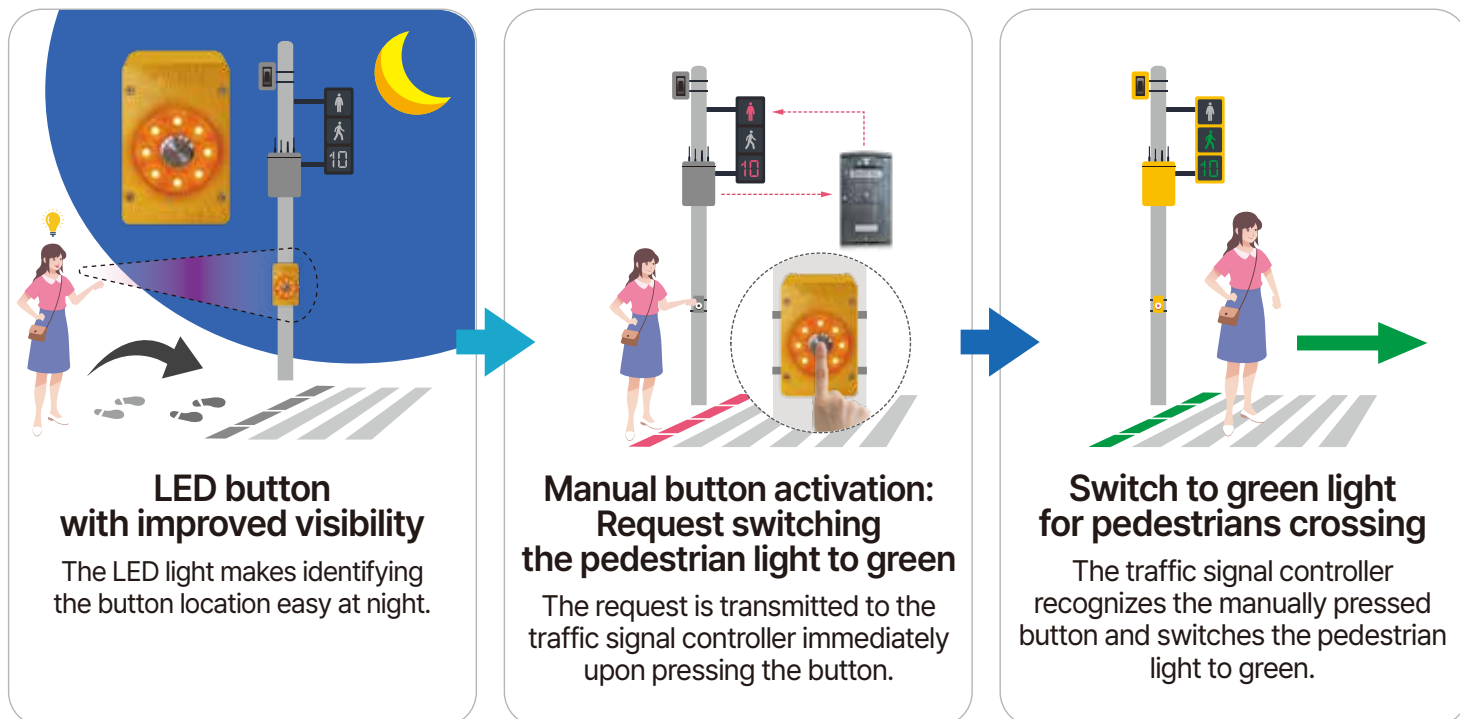


Switch to green light for pedestrians crossing

The traffic signal controller recognizes the manually pressed button and switches the pedestrian light to green.

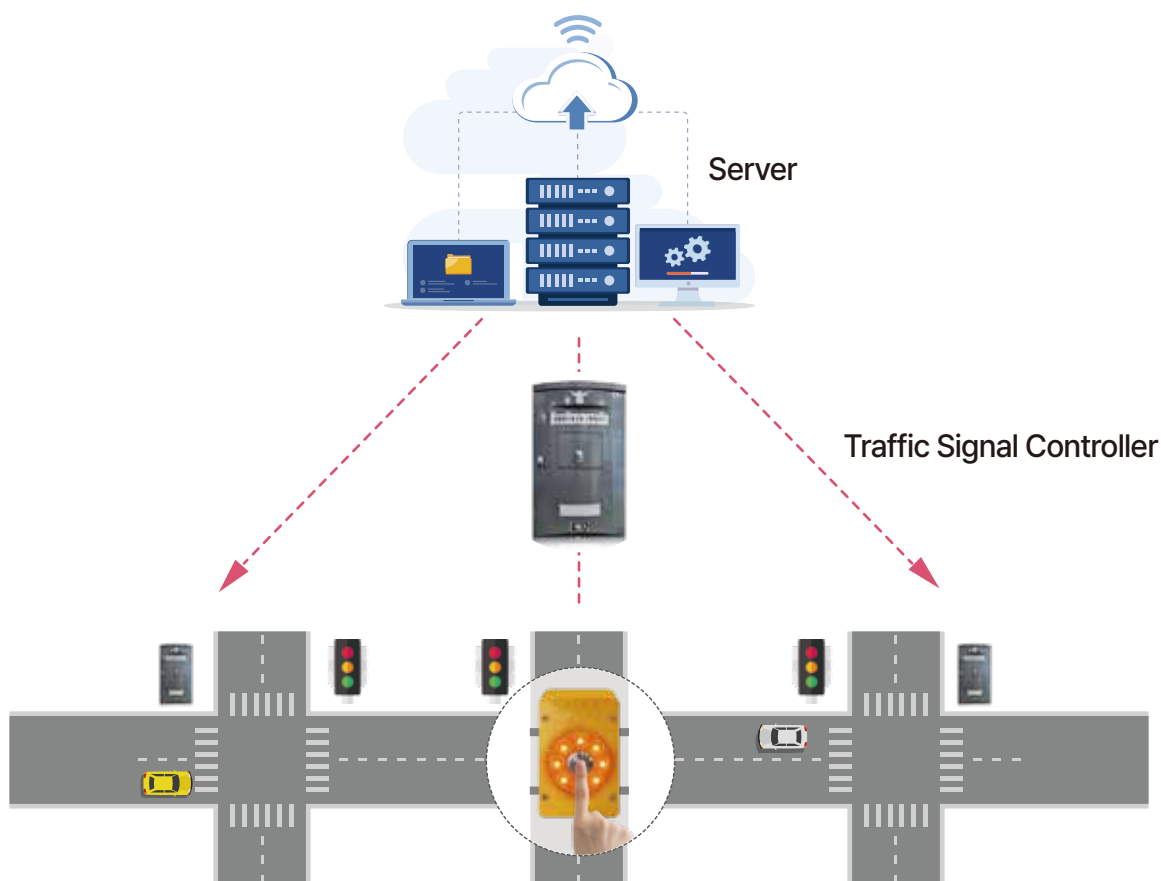
Manual Button Activation

The LED button allows pedestrians to easily identify locations of crosswalks even at night or in low-visibility environments. When pressing the button the pedestrian light turns to green.



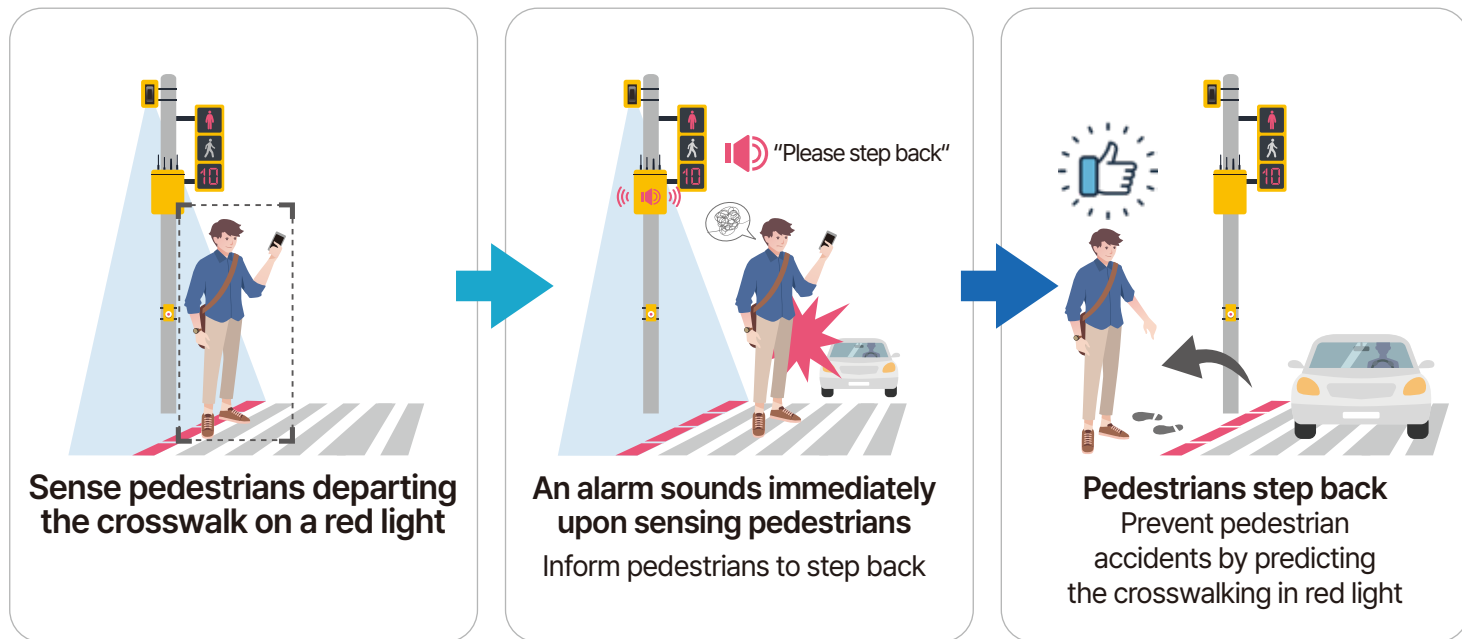
Integrated Control between Intersections

Integrated traffic signal control is a system that optimizes traffic flow by allowing central management and control of traffic lights of multiple intersections, its implements various functions: Including signal synchronization, responsive signaling, and priority signaling, etc., ITSC alleviates traffic congestion and provides a safe transportation environment.



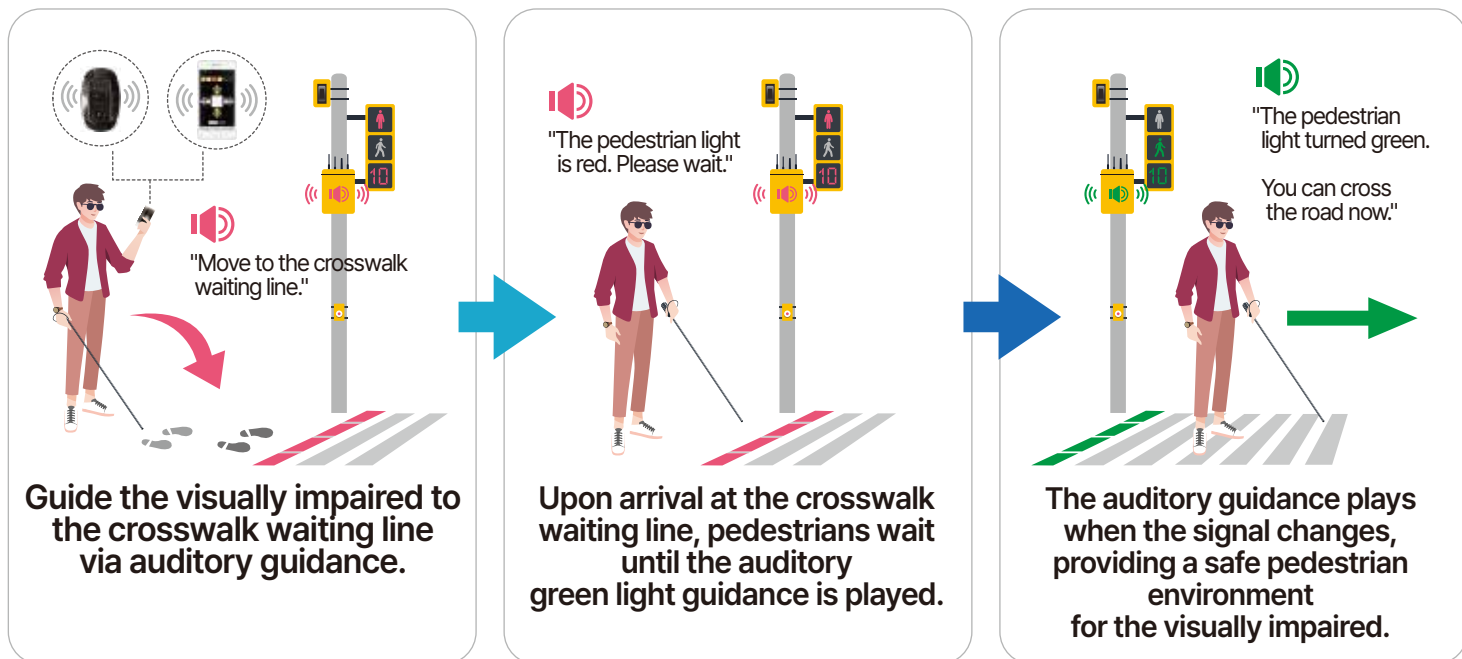
Crosswalk Departure Sensing and Warning

When pedestrians step on the crosswalk waiting line on red light, the sensor detects such movement and plays a warning sound. The warning sound alerts pedestrians of immediate danger and guides them to step back behind the waiting line to prevent accidents. This feature is particularly effective for ensuring the safety of vulnerable road users, such as children and seniors. It also reduces the drivers' burden from unexpected situations, improving the overall safety of the intersection.



Auditory Guidance for the Visually Impaired

Visually impaired pedestrians can use a smartphone app or remote control to activate the auditory guidance device. This device, upon activation, safely guides pedestrians to stand behind the crosswalk waiting line with auditory guidance. The auditory guidance is played when the signal changes informing the visually impaired to cross the road safely without assistance from others. This feature is a key element that enables independent mobility for individuals with reduced mobility by assisting them throughout the entire process: from approaching an intersection until completing the road crossing.



Product Specifications

Electrical Specifications

Labeling Items		Product Specifications
Input Power		AC 110/220V±10% (60Hz±5%)
Transmitter-Receiver Communication Protocol		358.500MHz
Communication Protocol between Receivers		235.3000MHz
Sensing Method / Direction		LiDAR / Use-specified range
Power Consumption		Within 30W
Audio Output		≤ 5W, variable range: 40dB~90dB, reference value: 70dB±5dB
Operating Temperature		-34~+74°C
Communication Method		RS232, RS485
Operating Distance	Category	Operating Distance
	Auditory location guide	20m
	Auditory signal guide	20m

External Dimensions

Sound-signaling Unit (Receiver)	Height	Width	Depth
	260±30(mm)	160±20(mm)	70±10(mm)
Button	125X95×40 (mm) ±5 (mm) or less		

HANGIL HC Co., Ltd.

Office. F410~413, 602~603, 325 Sandan-ro, Danwon-gu, Ansan-si, Gyeonggi-do, Republic of Korea Zip Code:15426

Tel: (+82) 31-431-2005 (0688) | Email: 2hg@hangilh.com | Website: www.hangilh.com

Factory 1: 45 Anseongmatchum-daero, Seoun-myeon, Anseong-si, Gyeonggi-do, Republic of Korea |

Factory 2: 732 Seongjin-ro, Ipjang-myeon, Seobuk-gu, Cheonan-si, Chungcheongnam-do, Republic of Korea

